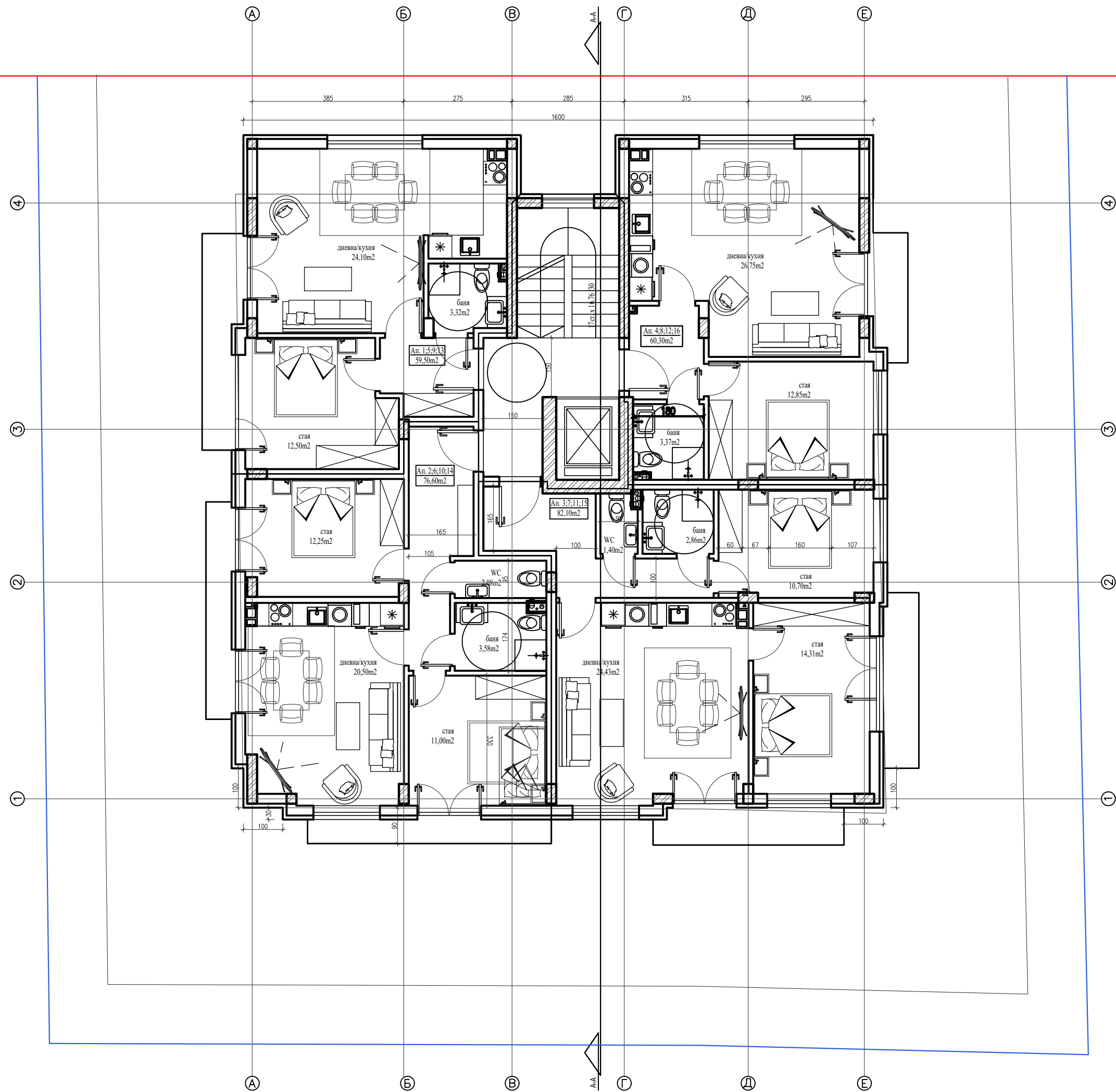
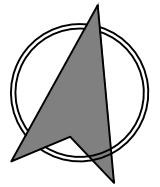
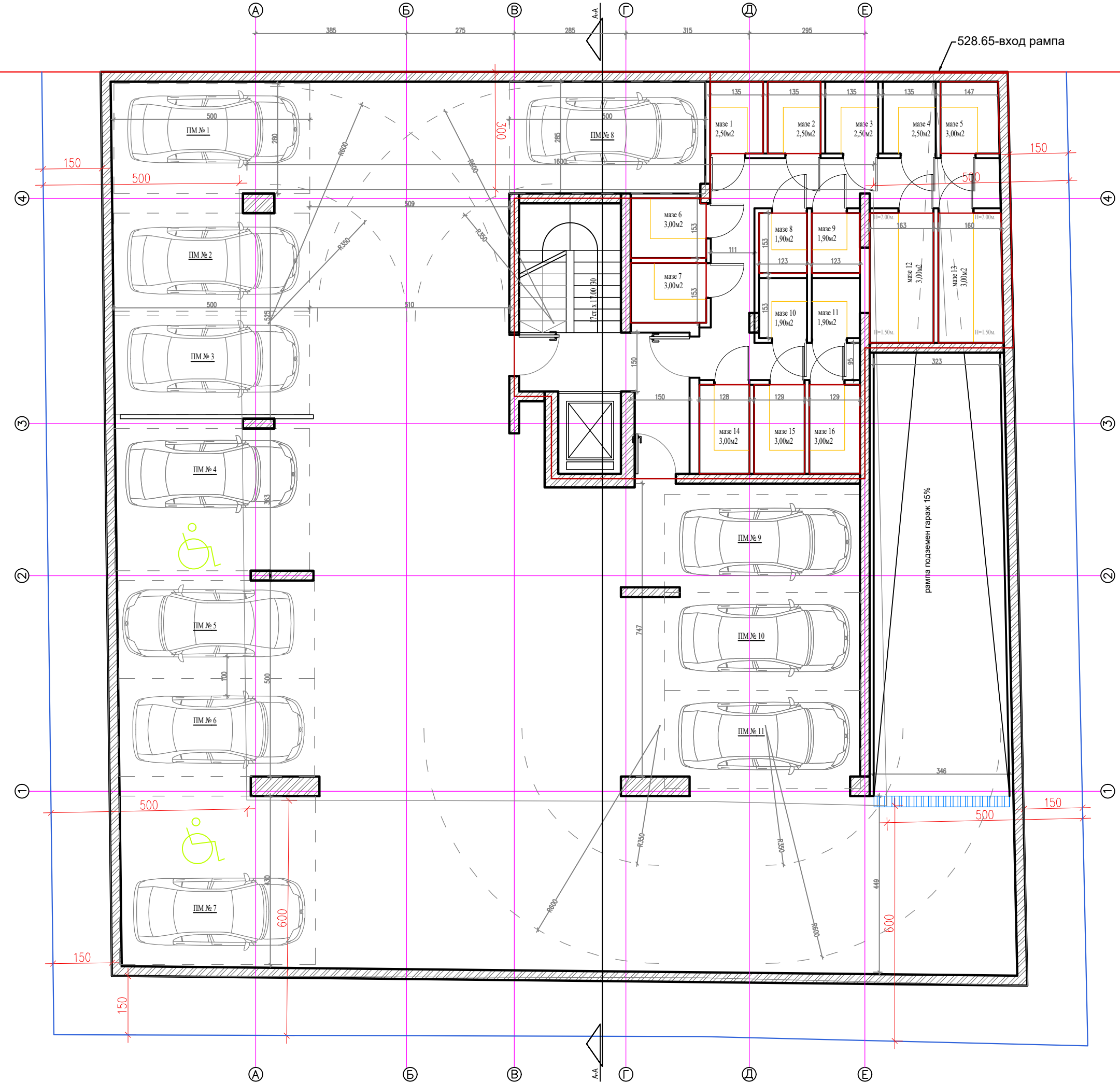


Architectural floor plan showing a symmetrical two-story building layout. The plan is defined by grid lines A through E horizontally and 1 through 4 vertically. A central staircase is labeled "7,00 x 1,76 x 1,30". Two main living areas are labeled "An. 17 89,00m²" and "An. 18 79,50m²". Dimensions for various sections are provided: 385, 275, 285, 315, 295, 1600, 360, 150, 350, 167, 203, and 290. Section lines A-A and B-B are indicated with arrows.





Сутерен-3П=539.22 кв.м.

11 паркоместа

